

Recognizing Risk Using Reservoirs

Session 3

Recognizing Risk Using Reservoirs: A Review



Welcome

Agenda

- Welcome and Introductions
- Recognizing Risk Using Reservoirs
- How Did the Germ Spread
- Bringing It Together
- Conclusion

Recognizing Risk Using Reservoirs

Recognizing Risk

- **Risk Recognition:** Seeing the potential for a problem to happen.
 - Seeing a potential problem doesn't mean the problem will definitely happen!
 - We take action to keep something bad from happening.
- **Reservoir:** a place where germs live and thrive.
- **Pathway:** a way for germs to be spread from their reservoir to another reservoir, or to a person to infect.

Example: Risk, Reservoir, Pathway



Germs in Healthcare

Reservoirs in the human body: skin, gastrointestinal (GI) system or “gut,” respiratory system, blood

Reservoirs in the healthcare environment: water and wet surfaces, dry surfaces, dirt and dust, and devices

Common pathways for germ spread in healthcare:

- Touch
- Breathing in
- Splashes or sprays
- Bypassing or breaking down the body’s natural defenses



Elements of How Germs Spread and Cause Infection

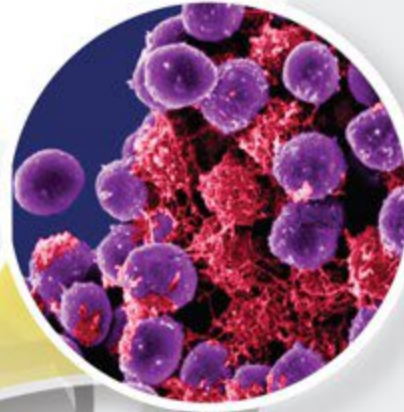


How Did the Germ Spread?

Scenario

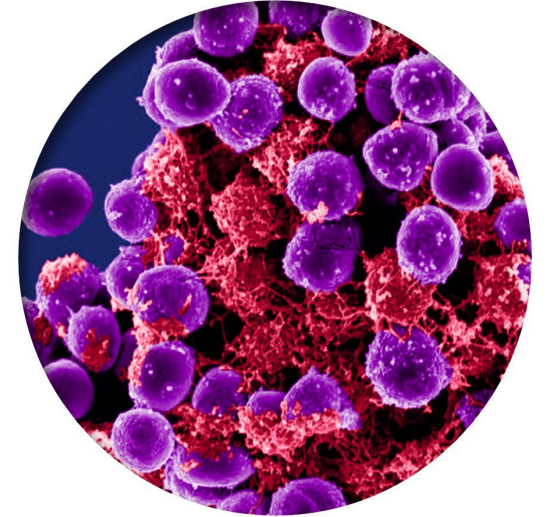
How Did the Germ Spread?

- **Scenario:** *Staphylococcus aureus* (*S. aureus*) spreads to a patient.
- **Discussion:** Recognize the reservoirs and pathways that are risks for the germ to spread.



Staphylococcus aureus (S. aureus) Basics

- Commonly called “staph”
- Type of germ (bacteria)
- Common, most of the time does not cause any harm
- Can cause serious or fatal infections
- Some types are resistant to antibiotics
- Anyone can get an infection, but some groups are at higher risk:
 - People with chronic conditions, such as diabetes or cancer
 - Patients in healthcare



From [Staphylococcus aureus in Healthcare Settings | HAI | CDC](#)

Scenario

Identify how staph could be spread by touch in this scenario.

- **Setting:** a patient's room with the patient in bed.
- **Interactions:**
 - A physician conducts a brief physical exam.
 - A nurse checks the patient's vital signs and starts an IV.
 - An EVS technician completes a daily room cleaning.



Scenario

Identify how staph could be spread by touch in this scenario.

- **Setting:** a patient's room with the patient in bed.
- **Interactions:**
 - A physician conducts a brief physical exam.
 - A nurse checks the patient's vital signs and starts an IV.
 - An EVS technician completes the daily room cleaning.



Discussion



Challenge

Infection control actions that could decrease or eliminate the risk of germ spread include:

- Better hand hygiene
- Cleaning and disinfection
- Using gowns and gloves
- Decolonization of patients
- Education of staff



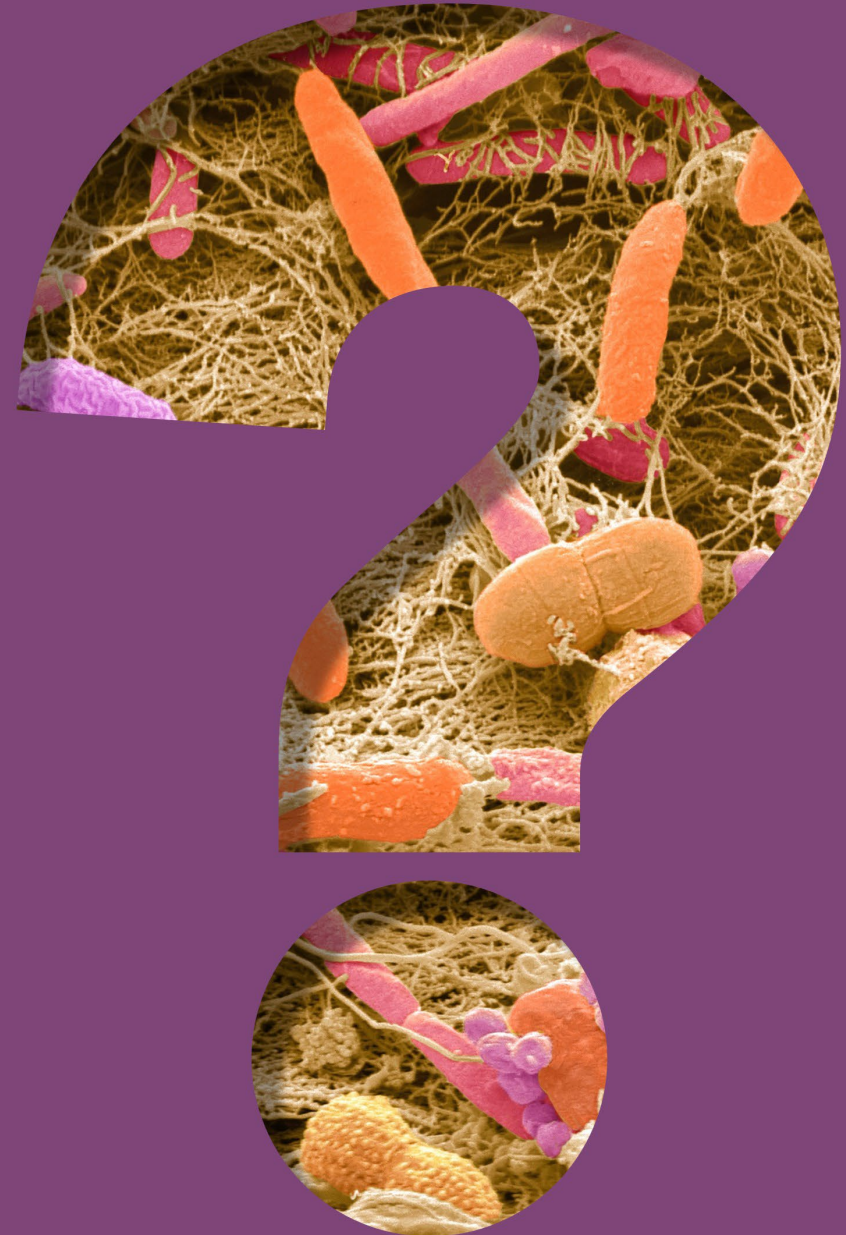
Bringing It Together

Reflection

- Thinking about your daily work, what is one step that you can take to recognize an infection risk?
- Jot down one action you can take to stop the spread of germs.



Questions



Key Takeaways

- ✓ Germs are found in certain places – called reservoirs – and need a pathway to spread to other places and people.
- ✓ When you understand where germs live and how they might be moved from one place to another or to people, you can recognize the risk for it to happen.
- ✓ When you recognize risks for germs to spread, you can choose the right infection control actions to keep it from happening.

How to Get Involved and Feedback



Project Firstline on CDC.gov:
<https://www.cdc.gov/infection-control/projectfirstline/index.html>



CDC's Project Firstline on Facebook:
<https://www.facebook.com/CDCProjectFirstline>



CDC's Project Firstline on Twitter:
https://twitter.com/CDC_Firstline



Project Firstline *Inside Infection Control* on YouTube:
<https://www.youtube.com/playlist?list=PLvvp9iOILTQZQGtDnSDGViKDdRtlc13VX>



To sign up for Project Firstline e-mails, click here:
https://tools.cdc.gov/campaignproxyservice/subscriptions.aspx?topic_id=USCDC_2104

- Project Firstline feedback form:
<https://www.cdc.gov/infectioncontrol/pdf/projectfirstline/TTK-ParticipantFeedback-508.pdf>
- Placeholder for partners to add their own links